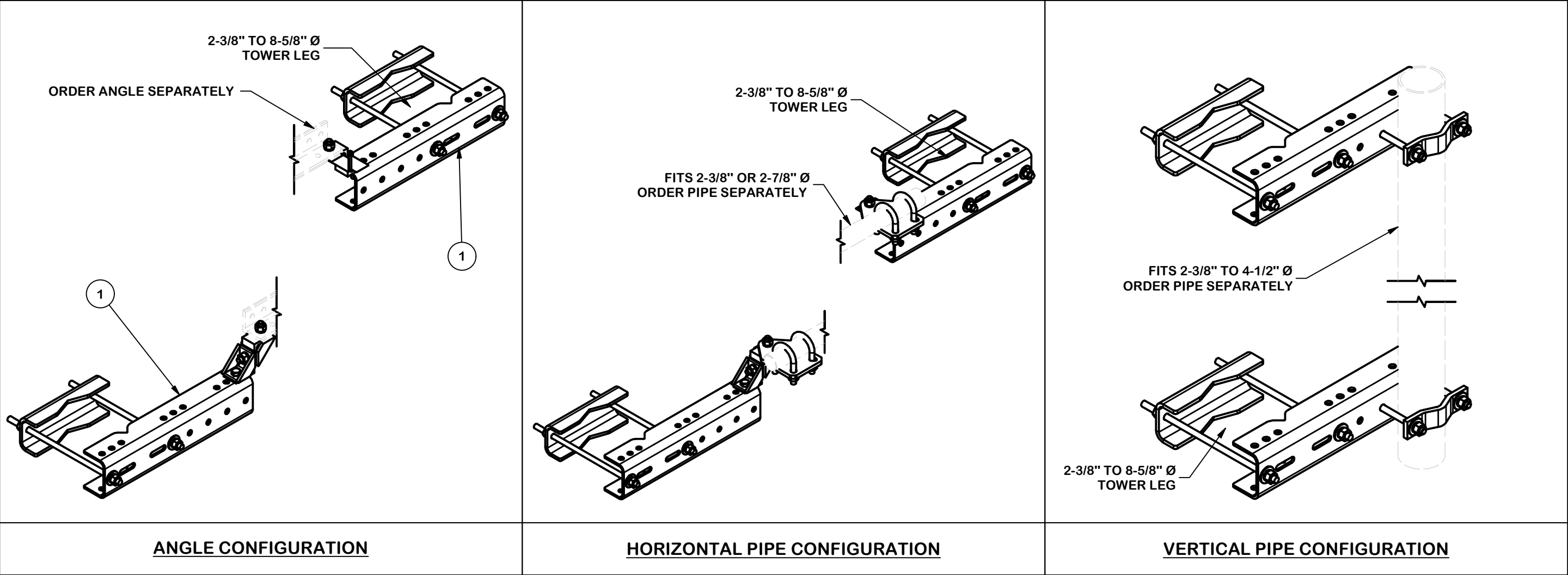


PARTS LIST					
ITEM	QTY	PART NO.	PART DESCRIPTION	UNIT WT.	NET WT.
1	2	CSC-K	CABLE SUPPORT CLAMP KIT	54.36	108.71
TOTAL WT. #					108.71



TOLERANCE NOTES

TOLERANCES ON DIMENSIONS, UNLESS OTHERWISE NOTED ARE:
SAWED, SHEARED AND GAS CUT EDGES ($\pm 0.030"$)
DRILLED AND GAS CUT HOLES ($\pm 0.030"$) - NO CONING OF HOLES
LASER CUT EDGES AND HOLES ($\pm 0.010"$) - NO CONING OF HOLES
BENDS AND ANGLES ARE $\pm 1/2$ DEGREE
ALL OTHER MACHINING ($\pm 0.030"$)
ALL OTHER ASSEMBLY ($\pm 0.060"$)

PATENT INFORMATION: WWW.SITEPRO1.COM/PATENTS

PROPRIETARY NOTE:
THE DATA AND TECHNIQUES CONTAINED IN THIS DRAWING ARE PROPRIETARY INFORMATION OF VALMONT INDUSTRIES AND CONSIDERED A TRADE SECRET. ANY USE OR DISCLOSURE WITHOUT THE CONSENT OF VALMONT INDUSTRIES IS STRICTLY PROHIBITED.

DESCRIPTION

UNIVERSAL CABLE SUPPORT CLAMP KIT

CPD NO.		DRAWN BY		ENG. APPROVAL	
NCS		KS 5/16/2024		JET 5/20/2024	
CLASS	SUB	DRAWING USAGE		CHECKED BY	
87	02	CUSTOMER		CMFL 5/20/2024	

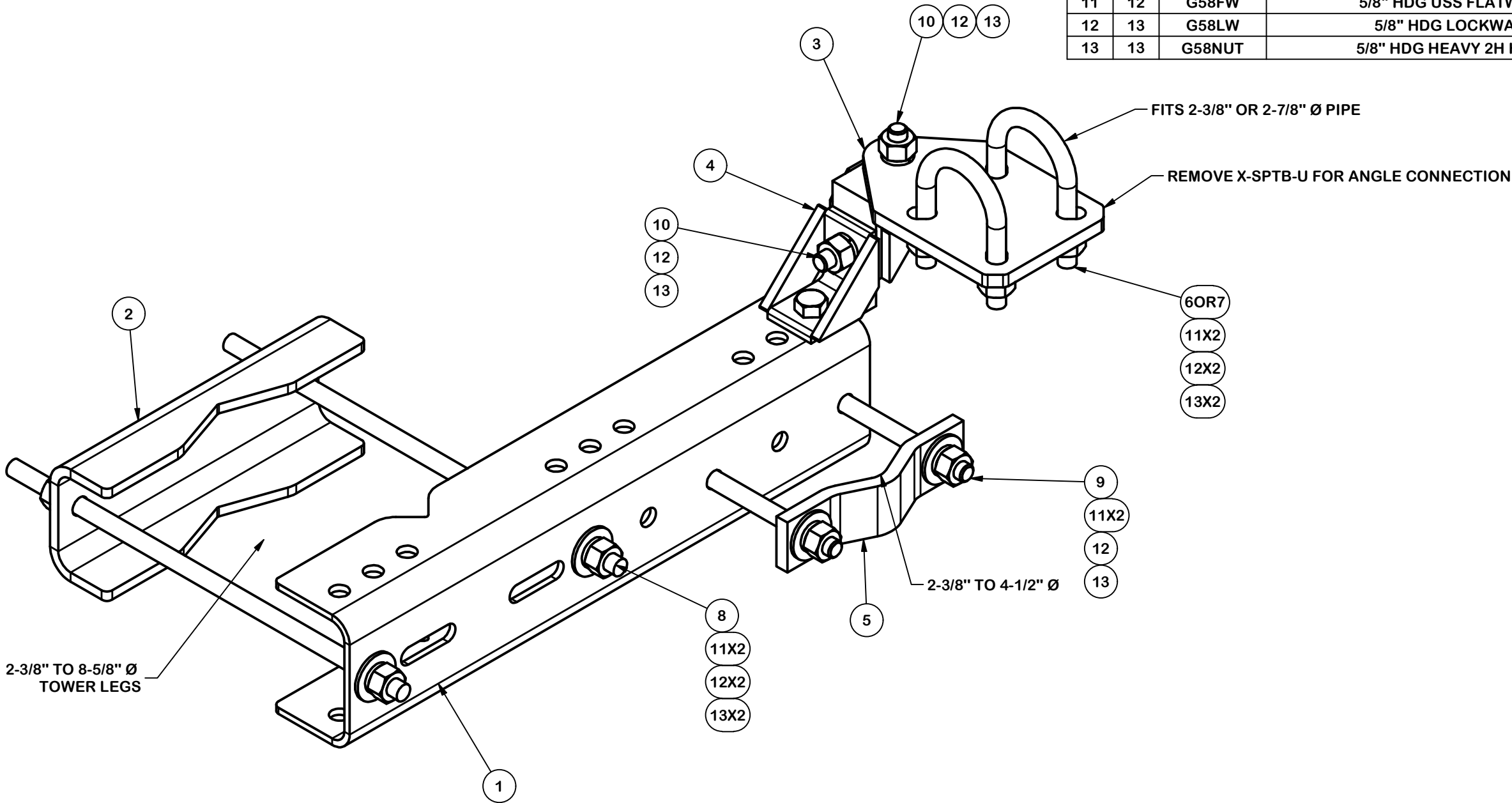


A valmont COMPANY

Engineering
Support Team:
sp1engineering@valmont.com

PART NO.	CSC-U
DWG. NO.	CSC-U

PARTS LIST						
ITEM	QTY	PART NO.	PART DESCRIPTION	LENGTH	UNIT WT.	NET WT.
1	1	X-CSC-24	FRONT TOWER LEG BRACKET	11 1/8 in	19.09	19.09
2	1	BP825-12	REAR TOWER LEG BRACKET	8 1/4 in	10.84	10.84
3	1	X-SPTB-U	SLIDING PIPE TIE BACK PLATE	5 1/2 in	5.70	5.70
4	2	X-TBCA	TIE BACK CLIP ANGLE		2.01	4.01
5	1	DCP	1/2" THICK, 5-3/4" CNTER TO CENTER CLAMP HALF	8 1/8 in	2.36	2.36
6	2	X-UB5258	5/8" X 2-5/8" X 4-1/2" X 2" U-BOLT (HDG.)		1.00	2.00
7	2	X-UB5300	5/8" X 3" X 5-1/4" X 2-1/2" U-BOLT (HDG.)		1.15	2.30
8	2	G58R-18	5/8" x 18" THREADED ROD (HDG.)		1.57	3.14
9	2	G5806	5/8" x 6" HDG HEX BOLT GR5 FULL THREAD	6 in	0.62	1.24
10	3	G5802	5/8" x 2" HDG HEX BOLT GR5		0.27	0.81
11	12	G58FW	5/8" HDG USS FLATWASHER	1/8 in	0.07	0.85
12	13	G58LW	5/8" HDG LOCKWASHER		0.03	0.34
13	13	G58NUT	5/8" HDG HEAVY 2H HEX NUT		0.13	1.69
					TOTAL WT. #	54.36



	<div>TOLERANCE NOTES</div> <div>TOLERANCES ON DIMENSIONS, UNLESS OTHERWISE NOTED ARE: SAWED, SHEARED AND GAS CUT EDGES ($\pm 0.030''$) DRILLED AND GAS CUT HOLES ($\pm 0.030''$) - NO CONING OF HOLES LASER CUT EDGES AND HOLES ($\pm 0.010''$) - NO CONING OF HOLES BENDS AND ANGLES ARE $\pm 1/2$ DEGREE ALL OTHER MACHINING ($\pm 0.030''$) ALL OTHER ASSEMBLY ($\pm 0.060''$)</div>			<div>DESCRIPTION</div> <div>CABLE SUPPORT CLAMP KIT</div>			<div><div><div>SITE PRO 1</div><div>A valmont COMPANY</div></div><div>Engineering Support Team: sp1engineering@valmont.com</div></div>	
	PATENT INFORMATION: WWW.SITEPRO1.COM/PATENTS			CPD NO. NCS	DRAWN BY KS 5/17/2024	ENG. APPROVAL JET 5/20/2024	PART NO. CSC-K	
	PROPRIETARY NOTE: THE DATA AND TECHNIQUES CONTAINED IN THIS DRAWING ARE PROPRIETARY INFORMATION OF VALMONT INDUSTRIES AND CONSIDERED A TRADE SECRET. ANY USE OR DISCLOSURE WITHOUT THE CONSENT OF VALMONT INDUSTRIES IS STRICTLY PROHIBITED.			CLASS 87	SUB 02	DRAWING USAGE CUSTOMER	CHECKED BY CMFL 5/20/2024	DWG. NO. CSC-K

PAGE 1 OF 1